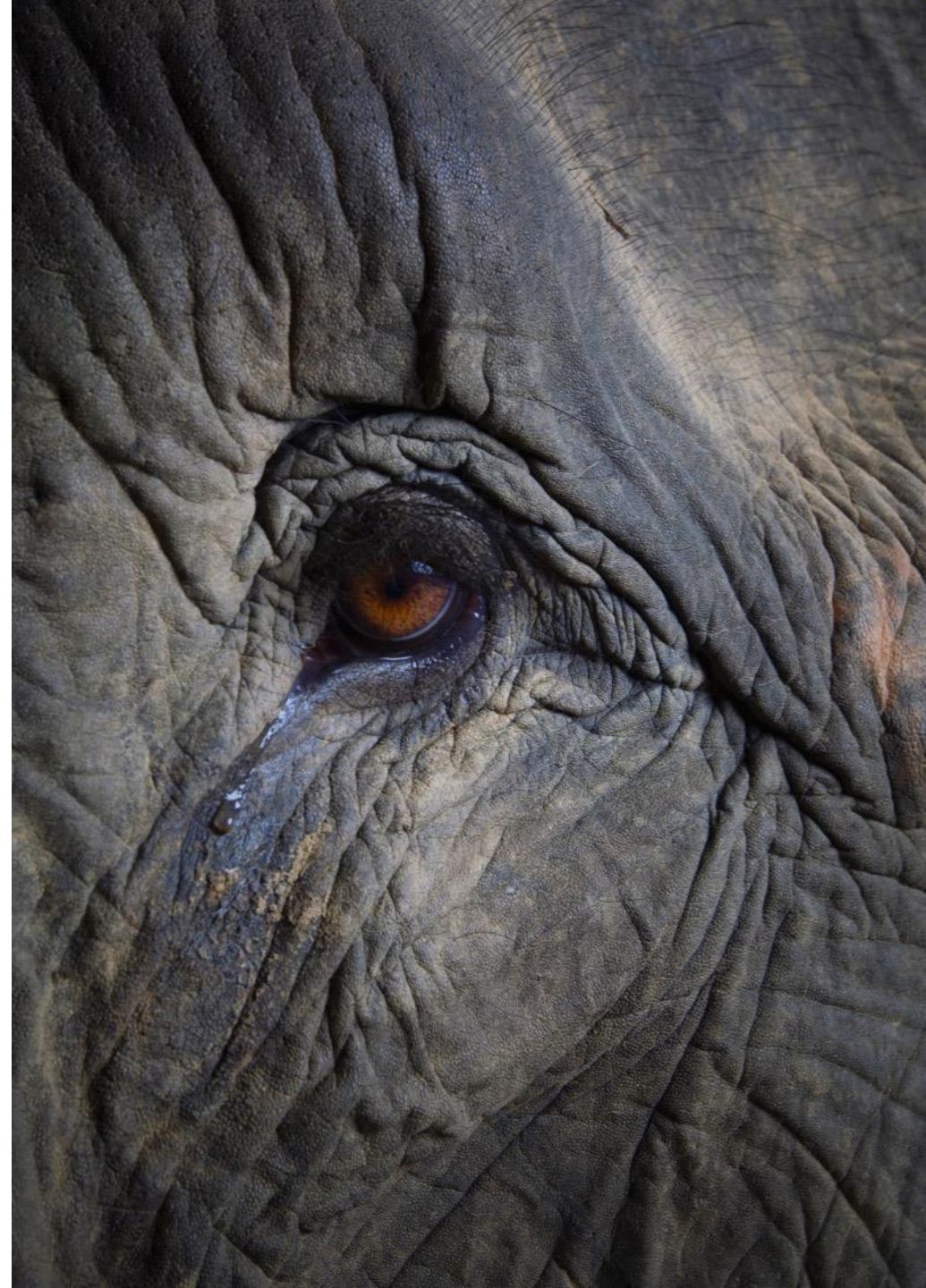


Objectives

1. Take stock of current production and trade cycles and forest sector reform processes to identify actions that will stabilize and restore Myanmar's production forests.
2. Assess reform processes in other land and natural resource sectors and examine the likely impacts (positive and negative) on current forestry reform processes.
3. Review Myanmar's recent experience with multi-stakeholder processes and detail critical factors likely to support reform in the forestry sector.



Process

- Literature Review
- Interviews
- Informal Advisory Group
- Multistakeholder Workshop



Key Take-Aways

“This report argues that to stabilize and rebuild a sustainable forestry sector for Myanmar, there is a vital need to develop **consensus**, first, on the role of forests in the nation’s ongoing development and, second, on how to restore the degraded forest estate.

Given the complexity surrounding the issue, a process that engages all stakeholders, including those **outside the forestry sector**, is required.”





MYANMAR

STABILIZING MYANMAR'S PRODUCTION FORSTS

Tint Lwin Thaung, Myanmar Country Director

A CRITICAL MOMENT FOR MYANMAR

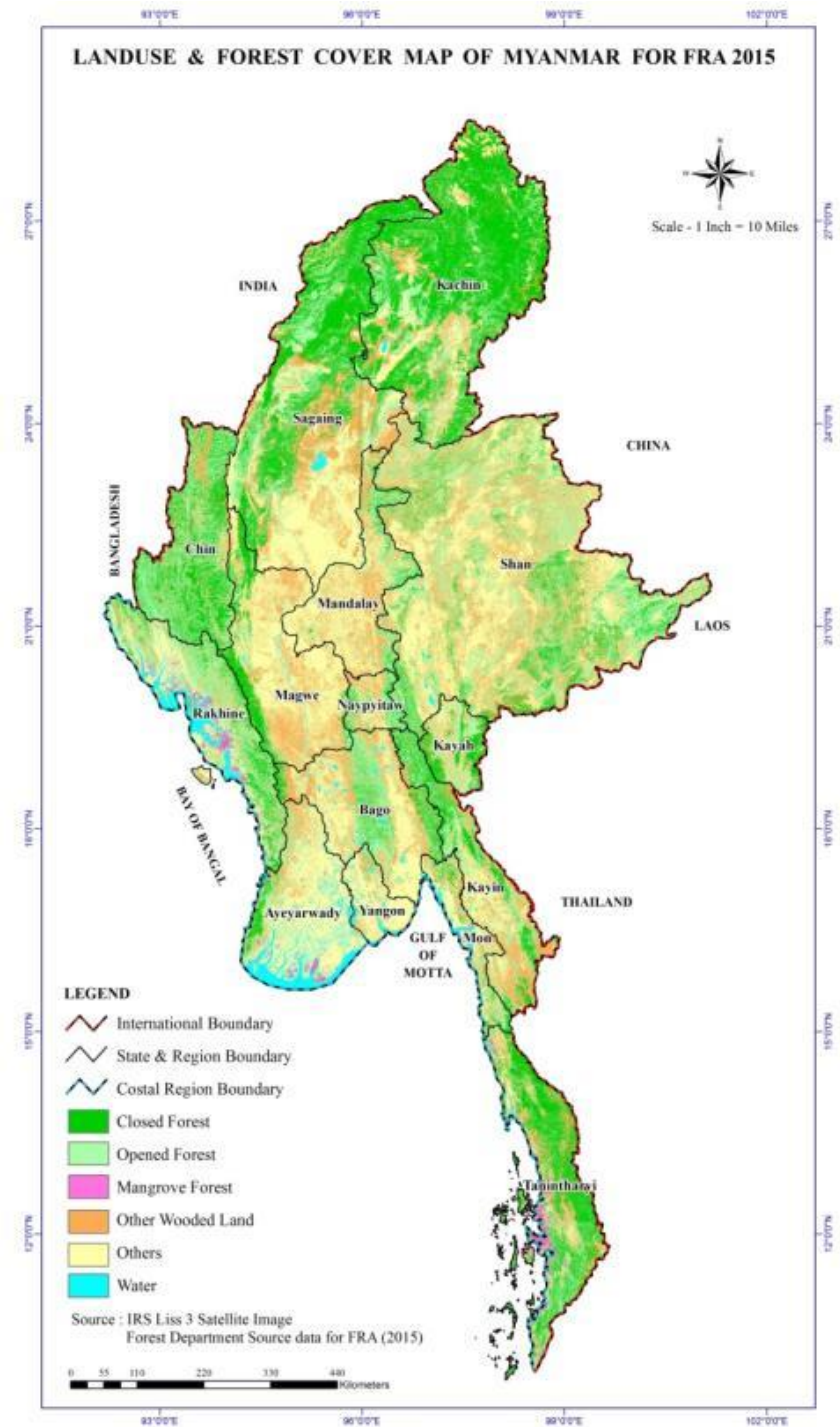


FORESTS



BACKGROUND

- Forest cover: 43% of the country
- Third-highest deforestation rate
- Second-most vulnerable country to climate change
 - Exposed to a number of severe climatic events with limited capacities to prevent or mitigate the effects of such events
- This is a serious threat to Myanmar's sustainable development



FOREST RESTORATION AND SUSTAINABLE MANAGEMENT

By 2030, our goal is to ensure that 50 million acres of Myanmar's forests are effectively managed

Our Approach

- Focus on forests outside of protected areas — where biodiversity is high but under great threat
- Conduct assessments of forest natural capital to inform decisions
- Revise forest restoration and management policy at national level
- Ensure active participation of local governments and communities
- Support climate & sustainable development goals